

# INDUSTRIAL VALVE & ENGINEERING SUPPLIES VALVE & ENGINEERING MERCHANT COMPANY

**BMC**  
VALVE

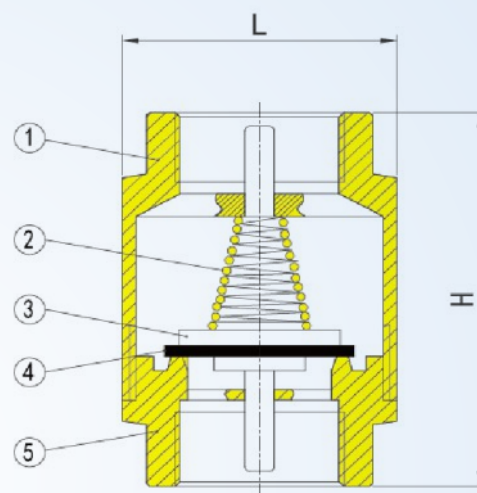
*Break Away*  
Brand Valves

## FIG 2260I BMC BRASS SPRING LOADED INLINE NON RETURN VALVE

Min and Max Working temperature:  
-10 Deg C to 120 Deg C

Threads:  
ISO228 (Equivalent to Din259 and Bs2779)  
PN16

Suitable for domestic water services,  
heating and air-conditioning plants,  
compressed air services - away from the compressor.  
Can be fitted horizontally, vertical or oblique.



ITEM	THREAD SIZE	L	H	DN	PN	Weight	Pcs/Carton
2260i	1/2"	32.5	46.5	17	16	120g	216
	3/4"	36	50	19		160g	144
	1"	41.5	53	23		210g	72
	1-1/4"	54	59.5	28		370g	42
	1-1/2"	64	63.5	33.5		570g	36
	2"	74.5	70.5	40.5		800g	18
	2-1/2"	95.5	93	66		1600g	8
	3"	110	100	68		2100g	4
	4"	145	109	98		3800g	2

ITEM NO.	Component	MATERIAL
1	Body	Forged Brass
2	Spring	304Stainless steel
3	Disc	Brass
4	Rubber gasket	N.B.R
5	Bonnet	Forged Brass

All Specifications are subject to change without notice

### Head Office:

+27-11-394-2066 (21 Lines)  
sales@industrialvalve.co.za  
www.industrialvalve.co.za  
114 Plane Road  
Spartan  
Gauteng  
South Africa

### KZN Branch:

+27-31-205-0218  
laven@industrialvalve.co.za  
www.industrialvalve.co.za  
Unit No 16 5-29  
Eaton Road  
Congella  
Durban

### Cape Town Branch:

+27-21-982-0302  
ivesct@industrialvalve.co.za  
www.industrialvalve.co.za  
Unit 14 Silver Park  
Silver Street  
Brackenfell  
Cape Town