

INDUSTRIAL VALVE AND ENGINEERING SUPPLIES (Pty) Ltd.(IVES)

VAT REG NO: 4280104276 CO REG NO 83/05965/07

VALVE AND ENGINEERING MERCHANT COMPANY (Pty) Ltd (VEMCO)

VAT REG NO: 4200211854 CO REG NO 1979/002851/07



Branch :	Address :	Tel :	Fax :	E - Mail :
Head Office: 114 Plane Road, Spartan, Gauteng		27-11-394-2066(21 lines)	27-11-394-2476	industrialvalve@futurejhb.co.za
Durban: Unit 1.5 Canberra Park, Canberra Road, Umbilo		27-31-205-0218	27-31-205-0210	iveskzn@futurejhb.co.za
Cape Town: Unit 14 Silver Park, Silver Street, Brackenfell		27-21-982-0302	27-21-982-0302	ivesct@industrialvalve.co.za

GROOVED FITTINGS

			
<u>RIGID COUPLING</u>	<u>FLEXIBLE COUPLING</u>	<u>90 DEG ELBOW</u>	<u>45 DEG ELBOW</u>
			
<u>22.5 DEG ELBOW</u>	<u>CAPS</u>	<u>EQUAL CROSS TEE</u>	<u>THREADED REDUCING CROSS</u>
			
<u>GROOVED REDUCING CROSS</u>	<u>GROOVED CON REDUCER</u>	<u>THREADED CON REDUCER</u>	<u>EQUAL TEE</u>
			
<u>REDUCING TEE</u>	<u>THREADED REDUCING TEE</u>	<u>ECCENTRIC REDUCER</u>	<u>U-BOLT MECHANICAL TEE</u>
			
<u>ADAPTOR FLANGE</u>	<u>THREADED MECHANICAL TEES</u>	<u>GROOVED MECHANICAL TEES</u>	<u>GROOVED FLANGE</u>

All Specifications are subject to change without notice

Break Away
VALVES

TECHNOLOGY AT ITS BEST

INDUSTRIAL VALVE AND ENGINEERING SUPPLIES (Pty) Ltd.(IVES)

VAT REG NO: 4280104276 CO REG NO 83/05965/07

VALVE AND ENGINEERING MERCHANT COMPANY (Pty) Ltd (VEMCO)

VAT REG NO: 4200211854 CO REG NO 1979/002851/07



Branch : Address :

Head Office: 114 Plane Road, Spartan, Gauteng

Durban: Unit 1.5 Canberra Park, Canberra Road, Umbilo

Cape Town: Unit 14 Silver Park, Silver Street, Brackenfell

Tel :

27-11-394-2066(21 lines)

27-31-205-0218

27-21-982-0302

Fax :

27-11-394-2476

27-31-205-0210

27-21-982-0302

E - Mail :

industrialvalve@futurejhb.co.za

iveskzn@futurejhb.co.za

ivesct@industrialvalve.co.za



INSTALLATION INSTRUCTIONS 1/3

Installation Instruction For Rigid & Flexible Coupling

1. Rigid Couplings can not enable the connection system to be flexible, and the couplings are integrated with steel pipes after they are fastened. If the sling has a bigger span, the pipes will support the connection depending on their own rigidity.
2. Flexible Couplings can enable the connection system to be flexible ,it allows the steel pipe has a certain angle deviation and relative deviation .There are some clearance between the ends of two steel pipes in order to suit the expansion and shrinkage of the pipelines. The pipe couplings should maintain the normal working condition under the maximum allowable deflexion and dislocation .Flexible Couplings can endure a certain terminal load, which refers to the load along the pipe axis to be borne by coupling grooves.



1. Before installation, whether the groove meet the standard should be checked and then wipe away the nicks iron rust



2. Spread lubricant on the pipe end and gasket ring.



3. Cover the compacting gasket ring at the sealing of a steel pipe.



4. Secure another grooved steel pipe to this one and cover the gasket ring on pipe end, making sure the gasket ring at the sealing position of both pipes.



5. Make sure coupling has fixed the pipes.



6. Gradually tighten nuts to torque.

All Specifications are subject to change without notice

Break Away
VALVES

TECHNOLOGY AT ITS BEST

INDUSTRIAL VALVE AND ENGINEERING SUPPLIES (Pty) Ltd.(IVES)

VAT REG NO: 4280104276 CO REG NO 83/05965/07

VALVE AND ENGINEERING MERCHANT COMPANY (Pty) Ltd (VEMCO)

VAT REG NO: 4200211854 CO REG NO 1979/002851/07



Branch : Address :

Head Office: 114 Plane Road, Spartan, Gauteng

Durban: Unit 1.5 Canberra Park, Canberra Road, Umbilo

Cape Town: Unit 14 Silver Park, Silver Street, Brackenfell

Tel :

27-11-394-2066(21 lines)

27-31-205-0218

27-21-982-0302

Fax :

27-11-394-2476

27-31-205-0210

27-21-982-0302

E - Mail :

industrialvalve@futurejhb.co.za

iveskzn@futurejhb.co.za

ivesct@industrialvalve.co.za



INSTALLATION INSTRUCTIONS 2/3

Installation Instruction for Mechanical Tees/Crosses, Side Outlets(Rolled type and Threaded type), including Model XGQT 3,3S,3US.

Side outlet (mechanical cross) can be directly used to connect the branch pipes with the main steel pipe. Firstly, to open the hole with hole-cutting machine on steel pipes, and clip the side outlet(mechanical cross) into the hole, around which are sealed by the gasket rings. Side outlet (mechanical cross) are categorized as threaded style and Grooved style. When be connected, the threaded mechanical tee or mechanical cross should be applied with some compacting paint on it's outer screw thread, and then roll thread around it to ensure the sealing performance of threaded joint.



1. Check the hole pickles.



2. Spread lubricant on gasket ring.



3. Put gasket seal in the Mechanical Tee.



4. Install the Mechanical Tee in the hole.



5. Install the bottom piece on the upper one of Mechanical Tee.



6. Secure the nuts and bolts of side outlet from both side.

All Specifications are subject to change without notice

Break Away
VALVES**TECHNOLOGY AT ITS BEST**

INDUSTRIAL VALVE AND ENGINEERING SUPPLIES (Pty) Ltd.(IVES)

VAT REG NO: 4280104276 CO REG NO 83/05985/07

VALVE AND ENGINEERING MERCHANT COMPANY (Pty) Ltd (VEMCO)

VAT REG NO: 4200211854 CO REG NO 1979/002851/07



Branch : Address :

Head Office: 114 Plane Road, Spartan, Gauteng

Durban: Unit 1.5 Canberra Park, Canberra Road, Umbilo

Cape Town: Unit 14 Silver Park, Silver Street, Brackenfell

Tel :

27-11-394-2066(21 lines)

27-31-205-0218

27-21-982-0302

Fax :

27-11-394-2476

27-31-205-0210

27-21-982-0302

E - Mail :

industrialvalve@futurejhb.co.za

iveskzn@futurejhb.co.za

ivesct@industrialvalve.co.za



INSTALLATION INSTRUCTIONS 3/3

Installation Instruction for Flange, including Model XGQT09

Flange adaptor (Flange adaptor, threaded flange, flange) can be used for the transitional connection between the grooved pipe and the equipment & valves with flanges. The diameter, location and measurement of the bolt hole on Flange adaptor are matching the bolts of international standards (GB9114.9115.9116.9119.9123-88).



1. Before installation, whether the groove meet the standard should be checked and then wipe away the pickles, iron rust, greasy dirt on gasket ring and pipe.



2. Assemble one part of flange on the pipe, and keep it in the groove of pipe



3. Put another part of flange in the groove, screw the bolts and nuts averagely on the two parts



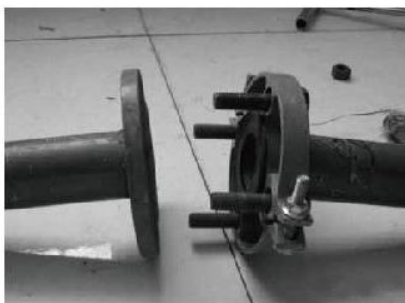
4. Check the gasket to keep the availability in any situation, spread lubricant on surface of gasket.



5. Assemble gasket in the place between pipe and flange groove, to keep the gasket in right orientation



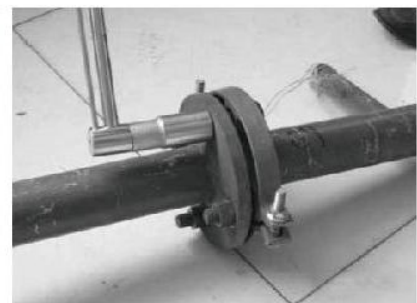
6. Secure the bolts and refer to Table 5 for Bolt-Torque.



7. Insert standard bolts in bolt holes.



8. Insert standard bolts in the mated flange holes and screw nuts on them.



9. Secure the nuts and refer to Table 5 for Bolt-Torque.

All Specifications are subject to change without notice

Break Away
VALVES

TECHNOLOGY AT ITS BEST