

INDUSTRIAL VALVE AND ENGINEERING SUPPLIES (Pty) Ltd.(IVES)

VAT REG NO: 4280104276 CO REG NO 83/05965/07

VALVE AND ENGINEERING MERCHANT COMPANY (Pty) Ltd (VEMCO)

VAT REG NO: 4200211854 CO REG NO 1979/002851/07



Branch : Address :

Head Office: 114 Plane Road, Spartan, Gauteng

Durban: Unit 1.5 Canberra Park, Canberra Road, Umbilo

Cape Town: Unit 14 Silver Park, Silver Street, Brackenfell

Tel :

27-11-394-2066(21 lines)

27-31-205-0218

27-21-982-0302

Fax :

27-11-394-2476

27-31-205-0210

27-21-982-0302

E - Mail :

industrialvalve@futurejhb.co.za

iveskzn@futurejhb.co.za

ivesct@industrialvalve.co.za



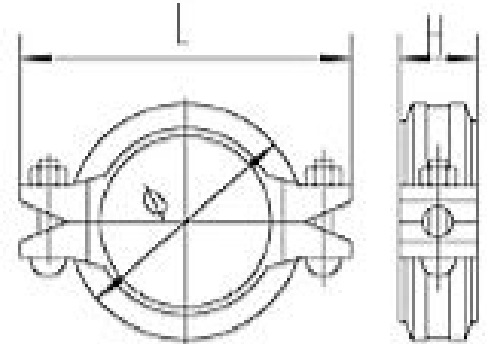
FIG FFICR

RIGID COUPLING

Rigid Coupling



1. Coupling Material : ASTM A536 G65-45-12
2. Gasket Material : EPDM
3. Bolts and Nuts: Cold Heading Steel
4. Hardness: 65±5shoroa
5. Tensile strength ≥15.2Mpa ,
6. Elongation at break ≥400%
7. Compression Set ≤30%



Nominal Size mm/in	Pipe O.D mm/in	Working Pressure PSI/MPa	Bolt Size No.-Size mm	Dimensions mm/in		
				Ø	L	H
25	33.7	300		55.	95	45
1	1.327	2.07	2-M10*45	2.165	3.74	1.772
32	42.4	300	2-M10*45	65	105	45
1¼	1.669	2.07	2-M10*45	2.559	4.133	1.772
40	48.3	300	2-M10*45	71.	110	45
1½	1.900	2.07	2-M10*45	2.795	4.331	1.772
50	60.3	300	2-M10*55	82	124	45
2	2.375	2.07	2-M10*55	3.228	4.882	1.772
65	73.0	300	2-M10*55	98	141	45
2½	2.875	2.07	2-M10*55	3.858	5.551	1.772
65	76.1	300	2-M10*55	100	142	45
3OD	3.000	2.07	2-M10*55	3.937	5.59	1.772
80	88.9	300	2-M12*60	113	160	46
3	3.500	2.07	2-M12*60	4.449	6.299	1.811
100	114.3	300	2-M12*65	142	190	49
4	4.500	2.07	2-M12*65	5.59	7.48	1.929
125	139.7	300	2-M12*75	168	218	49
5.5OD	5.500	2.07	2-M12*75	6.614	8.583	1.929
150	165.1	300	2-M12*75	194	244	49
6.5OD	6.500	2.07	2-M12*75	7.638	9.606	1.929
150	168.3	300	2-M12*75	198	248	49
6	6.625	2.07	2-M12*75	7.795	9.764	1.929
200	219.1	300	2-M16*100	256.	320	60
8	8.625	2.07	2-M16*100	10.079	12.598	2.362
250	273	300	2-M22*130	328	420	64
10	10.748	2.07	2-M22*130	12.913	16.535	2.52
300	323.9	300	2-M22*130	380	454	64
12	12.752	2.07	2-M22*130	14.961	17.874	2.52



Size	Unit Weight Kg
2"	0.72
2 1/2"	0.83
3"	1.05
4"	1.35
5"	1.81
6"	2.00
8"	3.95
10"	7.60
12"	9.50

All Specifications are subject to change without notice

Break Away
VALVES

TECHNOLOGY AT ITS BEST

Complete